



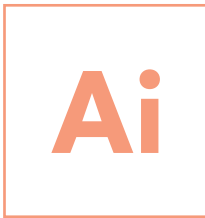
THE PRESS TOOLBOX

---

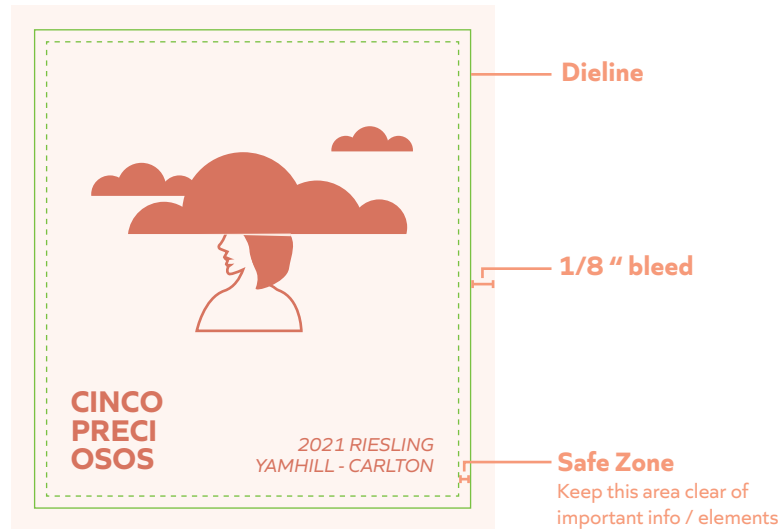
# ART STANDARDS

# ART STANDARDS

---



File format must be in Adobe Illustrator (preferred) or a High Resolution PDF from Photoshop



Here is a checklist of all our art requirements to ensure smooth sailing!

- FILE FORMAT MUST BE: Adobe Illustrator or High Resolution PDF from Photoshop  
VECTOR files are always preferred for the best print quality.
- Images must be at least 300 DPI
- 1/16 in. of bleed on all sides. Easy way to add this is to +.125" to your height and width
- Allow for 1/16 in. of space inside the dieline to create a "safe zone"
- Please send 1 file with all type converted to outlines and 1 file with live text
- All links embedded
- Please call out embellishments (Foil, Emboss, High-Build, etc.)
- The file is in CMYK (if printing digitally)
- Call out Pantone reference colors (Even on digital projects!)

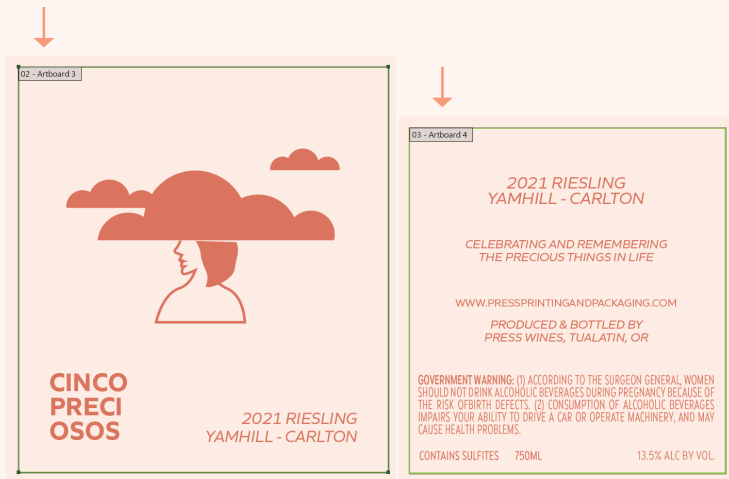
# HOW TO PREPARE YOUR ART FILE

	SIZE	COLORS TO TARGET	EMBELLISHMENTS
 PRINTING & PACKAGING CINCO PRECIOSOS FINAL ARTWORK	Front: 2.49"H X 2.27" W Back: 2.12"H X 1.94" W Corners: 0.0156 in		<ul style="list-style-type: none"> <li><span style="color: blue;">■</span> HIGH BUILD SCREEN</li> <li><span style="color: orange;">■</span> DEBOSS</li> </ul>
INFO@PRESSPRINTINGANDPACKAGING.COM • PRESSPRINTINGANDPACKAGING.COM • 503-218-9522 • 20141 SW 95TH AVENUE, TUALATIN, OREGON USA			

See screen shot of a prepared art file above.

Include callouts and pull embellishments with the die line off to the side. The embellishments pulled off to the side do not need to be to size. They are there as a roadmap.

Make sure you include embellishment layers to scale on top of the label art as well. (see above example)




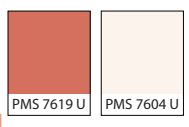
## BONUS TIP FOR DESIGNERS

Have an artboard for each label. If you are working with multiple skus you can 'copy' off of the artboard and 'paste in place' (ctrl-shift-v) on the other sku's artboard to keep everything easily in the same place between label skus.

## CALL OUTS

Special treatments, embellishments, specific colors you need matched?  
Call them out!

See an example of our call out footer below.. We put this at the bottom of all our art files.

 PRINTING & PACKAGING  CINCO PRECIOSOS  FINAL ARTWORK	SIZE	COLORS TO TARGET	EMBELLISHMENTS
	Front: 2.75"H X 4.75" W Back: 2.75"H X 2.5" W Corners: 0.0156 in	 PMS 7619 U    PMS 7604 U	<ul style="list-style-type: none"> <li><span style="color: blue;">■</span> HIGH BUILD SCREEN</li> <li><span style="color: orange;">■</span> DEBOSS</li> <li><span style="color: brown;">■</span> FOIL - KURZ 415</li> </ul>
INFO@PRESSPRINTINGANDPACKAGING.COM • PRESSPRINTINGANDPACKAGING.COM • 503-218-9522 • 20141 SW 95TH AVENUE, TUALATIN, OREGON USA			

### SIZES & CORNER RADIUS

Call out the exact size!

Do not round up or down. Rounding the size will causes confusion in the long run.

### COLORS TO TARGET

Even if you are printing digitally, please give us Pantone call outs to match to for those important colors.

Need a Pantone book to reference?  
Come in and use ours!

### EMBELLISHMENTS

Call out any embellishments you want!  
If you're calling out a foil - please specify a foil color. Come in to see all the foil colors!

We love helping to engineer labels.  
Let us know if you need embellishment advice. We can help get you the best bang for your buck.

**BONUS!** Why do we have the height before width? This is a standard practice in label printing because of how the labels are run on the press. This can get a little confusing because everywhere else is WxH. To help reduce confusion mark your measurements with a 'W' for width and an 'H' for height